

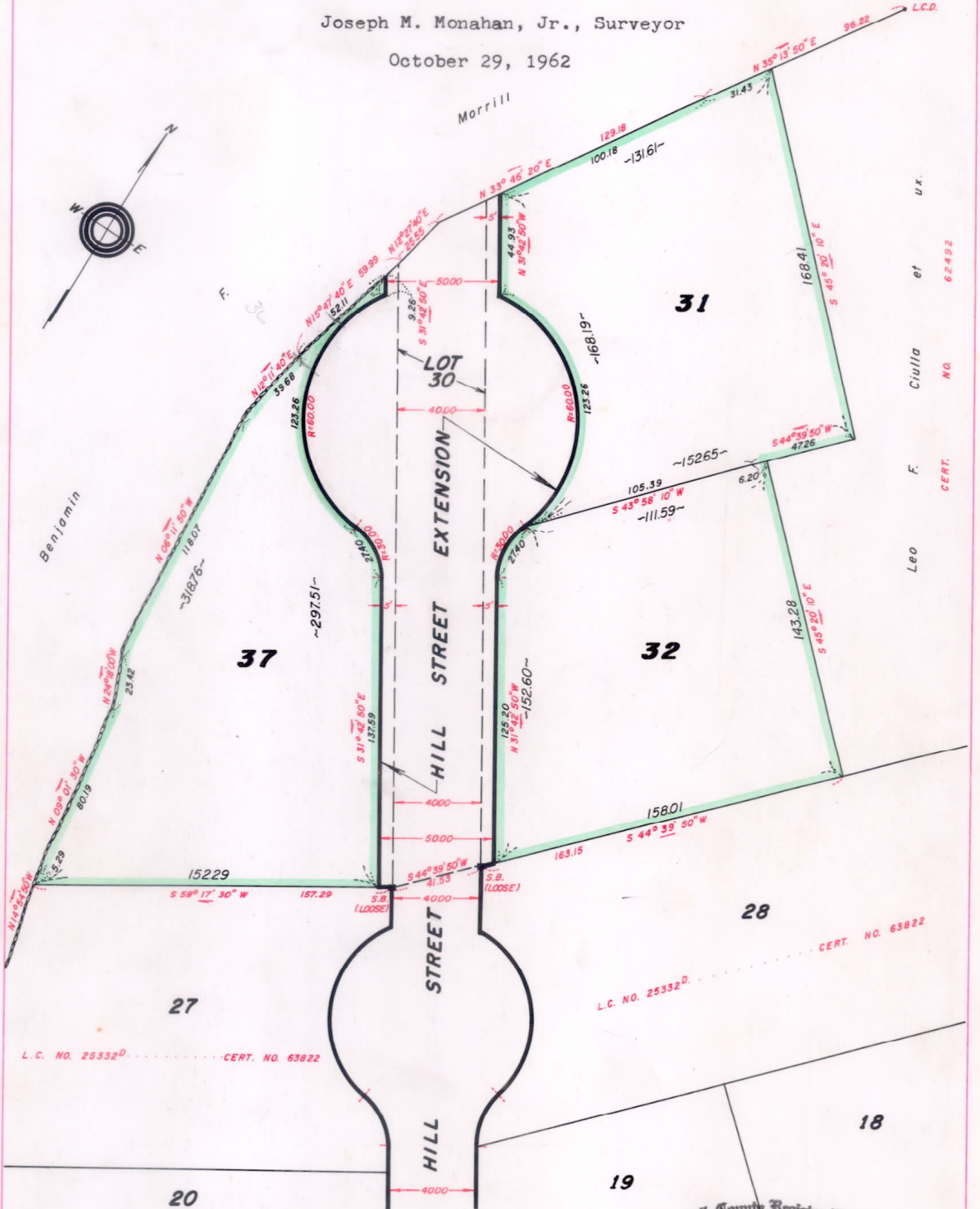
M

NOT AN OFFICIAL COPY SUBDIVISION PLAN OF LAND IN FOXBOROUGH

NOT AN OFFICIAL COPY 25332K

Joseph M. Monahan, Jr., Surveyor

October 29, 1962



L.C. NO. 25332<sup>D</sup> ..... CERT. NO. 63922

L.C. NO. 25332<sup>D</sup> ..... CERT. NO. 63922

Subdivision of Lot 29 and part of Lot 8  
Shown on Plans 25332<sup>E</sup> and 25332<sup>A</sup>  
Filed with Cert. of Title Nos. 67623 and 54218  
Registry District of Norfolk County

Separate certificates of title may be issued for land  
shown hereon as lots 31, 32 and 37.  
By the Court.

December 14, 1962

*Magaret M. Daly*  
Recorder.

Norfolk County Registry District

MAR - 4 1963

RECEIVED FOR REGISTRATION  
9 O'CLOCK 00 m a m  
NOTED ON CERTIFICATE NO. 72152  
IN REGISTRATION BOOK 361 PAGE 152

Copy of part of plan  
filed in  
LAND REGISTRATION OFFICE  
December 14, 1962  
Scale of this plan 50 feet to an inch  
C.M. Anderson, Engineer for Court